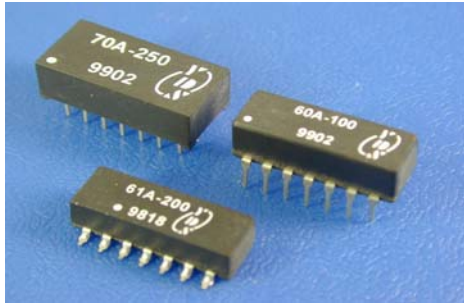




14 PIN DUAL-IN-LINE TTL ACTIVE DELAY LINE



FEATURES

- 14-PIN PACKAGE.
- 10 EQUALLY-SPACED TAPS.
- TTL SCHOTTKY INTERFACED.
- TOTAL DELAYS FROM 25-1000nS.

ELECTRICAL CHARACTERISTICS

I _{IH} Logic"1" Input Current	:100uA max
I _{IL} Logic"0" Input Current	:-4mA max
V _{OH} Logic"1" Output Voltage	:2.4V min
V _{OL} Logic"0" Output Voltage	:0.4V max
V _{IH} Logic"1" Input Voltage	:2.0V min
V _{IL} Logic"0" Input Voltage	:0.8V max
TA Operating Temperature	:0°C to 70°C
N _H Fanout"1" Output	:20 TTL Load
N _L Fanout"0" Output	:10 TTL Load
Supply Current	:150mA Typ.

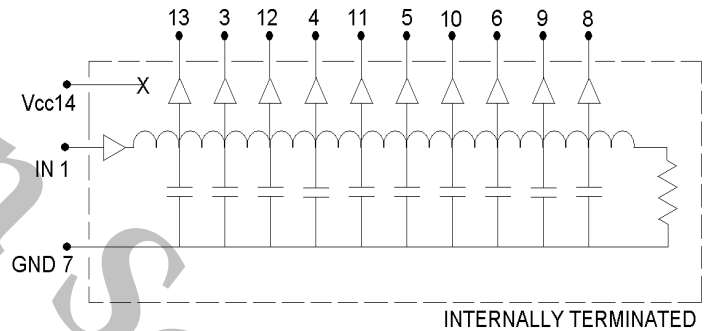
INPUT PULSE TEST CONDITION

Pulse Voltage	:3.2V
Pulse Width	:50nS min. or 100%T _d
Duty Cycle	:<50%
Pulse Rise Time	:2nS(0.75 to 2.4V)
Time Delay Measured	:@1.5V level
Supply Voltage V _{cc}	:5.0±0.25Vdc

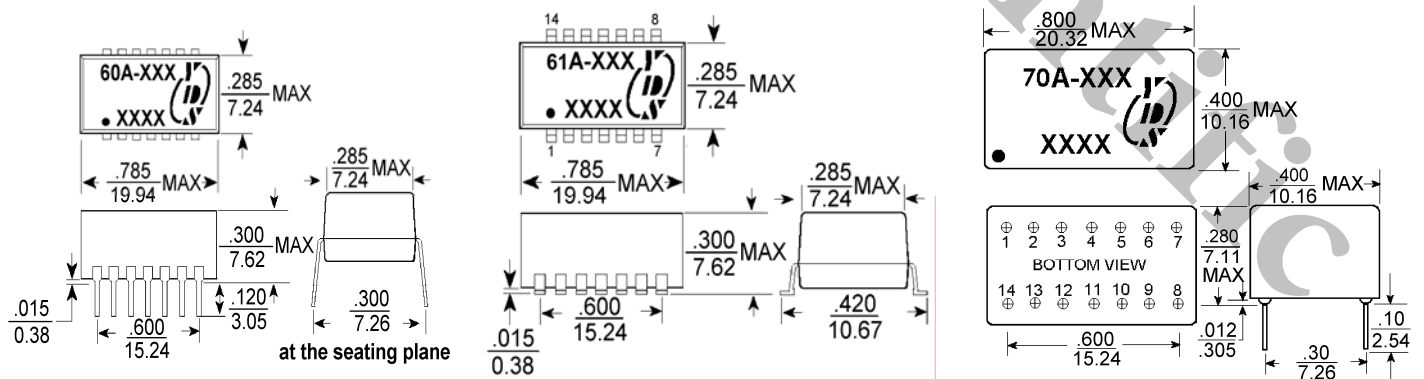
ELECTRICAL SPECIFICATIONS

PART NO.	DELAY TIME T _d (nS)	TAP DELAY (nS)	RISE TIME Tr(nS)max
60A/61A/70A-025	25±2nS	2.5±1	4
60A/61A/70A-050	50±5%	5±2	4
60A/61A/70A-075	75±5%	7.5±2	4
60A/61A/70A-100	100±5%	10±2	4
60A/61A/70A-150	150±5%	15±2	4
60A/61A/70A-200	200±5%	20±2	4
60A/61A/70A-250	250±5%	25±5%	4
60A/61A/70A-300	300±5%	30±5%	4
60A/61A/70A-500	500±5%	50±5%	4
60A/61A/70A-1000	1000±5%	100±5%	4

PIN CONNECTIONS



MARKINGS AND DIMENSIONS



Dimensions:inches/mm

Unless otherwise specified, all tolerances are ±.010/±0.25