

FEATURES

- Operating bandwidth of .08 MHz to 400 MHz
- Peak IR reflow temperature rating of 235°C
- Excellent insertion loss and return loss
- Various impedance ratios available
- Recognized by UL 1950



ELECTRICAL SPECIFICATIONS @25°C - Operating Temperature -40°C to +85°C

Part Number	Impedance Ratio*	Turns Ratio*	Bandwidth** (3dB,MHz)	Schematic	Primary Pins
-------------	------------------	--------------	-----------------------	-----------	--------------

SURFACE MOUNT

14T-4011A	1:1	1:1	.15-400	A	4-6
14T-2012B	1:1CT	1:1CT	.08-200	B	4-6
14T-3513B	1:4CT	1:2CT	.20-350	B	4-6
14T-2014A	1:9	1:3	.15-200	A	4-6

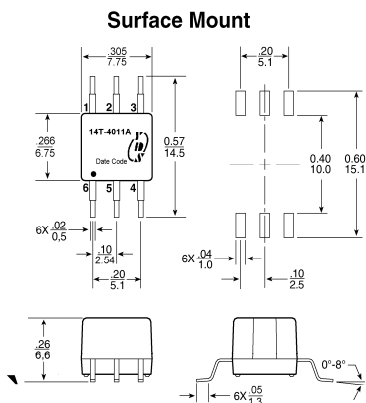
THROUGH HOLE

16T-4011A	1:1	1:1	.15-400	A	4-6
16T-2012B	1:1CT	1:1CT	.08-200	B	4-6
16T-3513B	1:4CT	1:2CT	.20-350	B	4-6
16T-2513B	1:4CT	1:2CT	.20-250	B	4-6

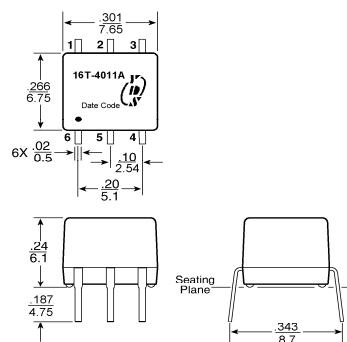
* Impedance and turns ratio are specified primary:secondary.(CT=Center Tap)

**Bandwidth is referenced to midband loss.

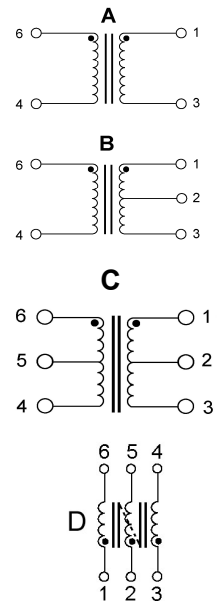
Mechanicals



Through Hole



Schematics



Part Number: $\frac{14T/16T - 401}{A} \frac{1}{B} \frac{A}{C} \frac{NL}{D E}$
 A:Series
 B:Inductance
 C:Sequence id
 D:Schematic
 E:RoHS Version

Dimensions: Inches/mm

Unless otherwise specified,all tolerances are $\pm .010/0,25$