



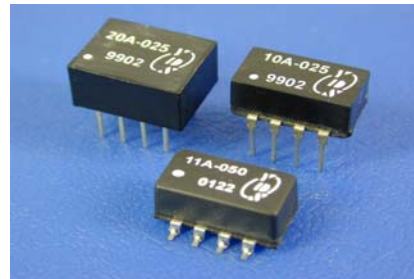
### 8 PIN DUAL-IN-LINE TTL ACTIVE DELAY LINE

#### FEATURES

- 8-PIN PACKAGE.
- 5EQUALLY-SPACED TAPS.
- TTL SCHOTTKY INTERFACED.
- TOTAL DELAYS FROM 25-1000nS.

#### ELECTRICAL CHARACTERISTICS

IIH LOGIC"1" INPUT CURRENT	:50UA MAX
IIL LOGIC"0" INPUT CURRENT	:-2mA MAX
VOH LOGIC"1" OUTPUT VOLTAGE	:2.7V MIN
VOL LOGIC"0" OUTPUT VOLTAGE	:0.5V MAX
VIH LOGIC"1" INPUT VOLTAGE	:2.0V MIN
VIL LOGIC"0" INPUT VOLTAGE	:0.8V MAX
TA OPERATING TEMPERATURE	:0°C TO 70°C
NH FANOUT"1" OUTPUT	:20 TTL LOAD
NL FANOUT"0" OUTPUT	:10 TTL LOAD
SUPPLY CURRENT	:75mA TYP.



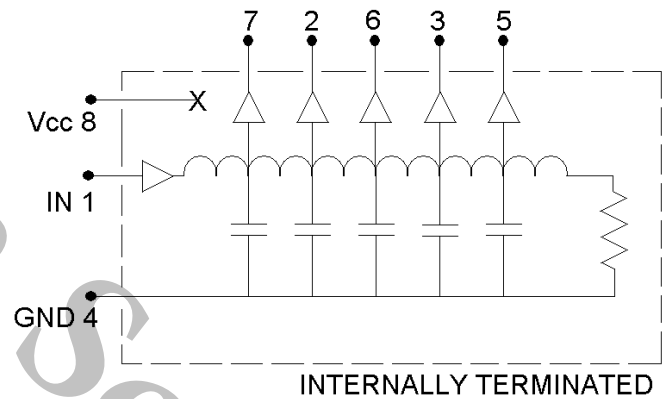
#### INPUT PULSE TEST CONDITION

PULSE VOLTAGE	:3.2V
PULSE WIDTH	:50NS MIN. OR 100%TD
DUTY CYCLE	:<50%
PULSE RISE TIME	:2NS(0.75 TO 2.4V)
TIME DELAY MEASURED	:@ 1.5V level
SUPPLY VOLTAGE VCC	:5.0±0.25VDC

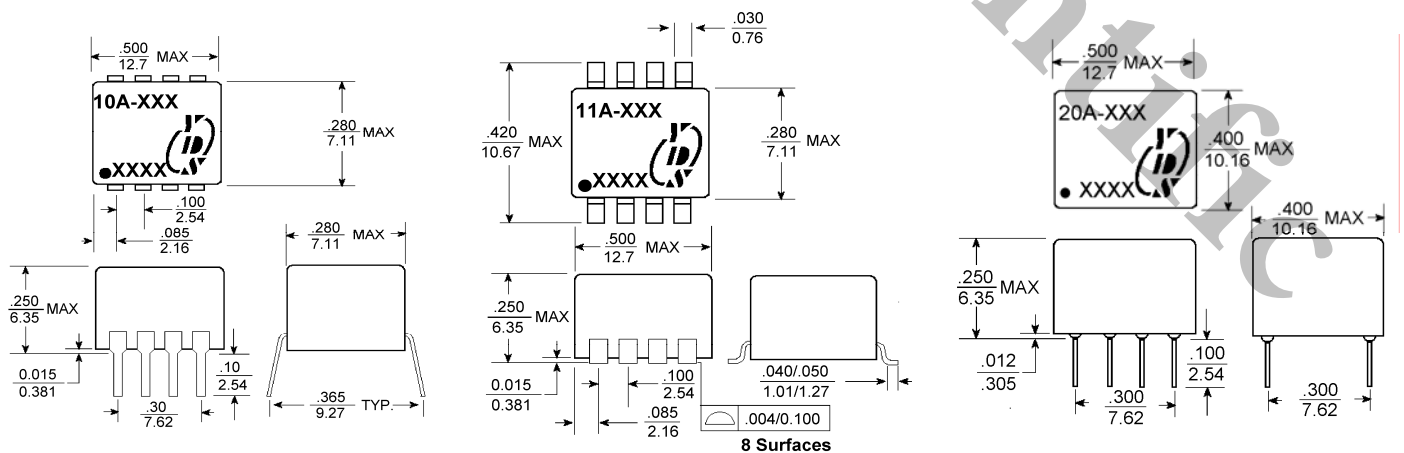
#### ELECTRICAL SPECIFICATIONS

PART NO.	DELAY TIME Td(nS)	TAP DELAY (nS)	RISE TIME Tr(nS)max
10A/11A/20A-025	25±2	5±2	4
10A/11A/20A-050	50±5%	10±2	4
10A/11A/20A-075	75±5%	15±2	4
10A/11A/20A-100	100±5%	20±2	4
10A/11A/20A-150	150±5%	30±2	4
10A/11A/20A-200	200±5%	40±2	4
10A/11A/20A-250	250±5%	50±5%	4
10A/11A/20A-300	300±5%	60±5%	4
10A/11A/20A-500	500±5%	100±5%	4
10A/11A/20A-1000	1000±5%	200±5%	4

#### PIN CONNECTIONS



#### MARKINGS AND DIMENSIONS



Dimensions: inches/mm Unless otherwise specified, all tolerances are ±.010/±0.25