



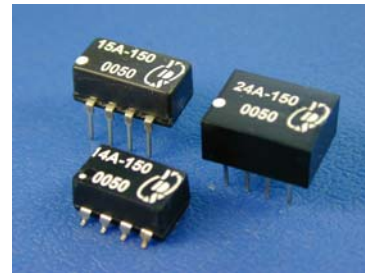
### 8 PIN LEADING & TRAILING TTL ACTIVE DELAY LINE

#### FEATURES

- 8-PIN PACKAGE.
- 5EQUALLY-SPACED TAPS.
- TTL SCHOTTKY INTERFACED.
- TOTAL DELAYS FROM 25-1000nS.

#### ELECTRICAL CHARACTERISTICS

IIH LOGIC"1" INPUT CURRENT	:50UA MAX
IIL LOGIC"0" INPUT CURRENT	:-2mA MAX
VOH LOGIC"1" OUTPUT VOLTAGE	:.2.7V MIN
VOL LOGIC"0" OUTPUT VOLTAGE	:.0.5V MAX
VIH LOGIC"1" INPUT VOLTAGE	:.2.0V MIN
VIL LOGIC"0" INPUT VOLTAGE	:.0.8V MAX
TA OPERATING TEMPERATURE	:.0°C TO 70°C
NH FANOUT"1" OUTPUT	:.20 TTL LOAD
NL FANOUT"0" OUTPUT	:.10 TTL LOAD
SUPPLY CURRENT	:.75mA TYP.



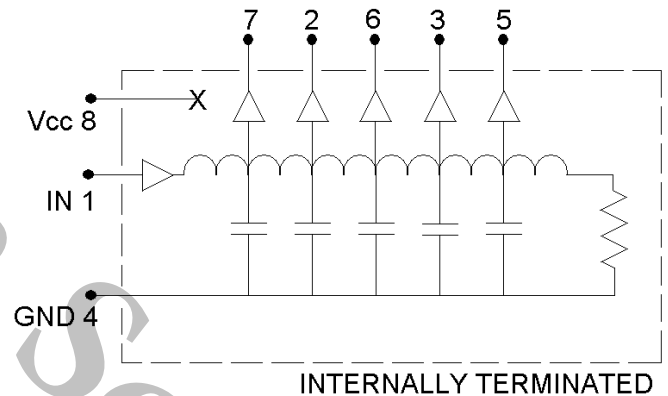
#### INPUT PULSE TEST CONDITION

PULSE VOLTAGE	:.3.2V
PULSE WIDTH	:.50NS MIN. OR 100%TD
DUTY CYCLE	:.<50%
PULSE RISE TIME	:.2NS(0.75 TO 2.4V)
TIME DELAY MEASURED	:.@1.5V level
SUPPLY VOLTAGE VCC	:.5.0±0.25VDC

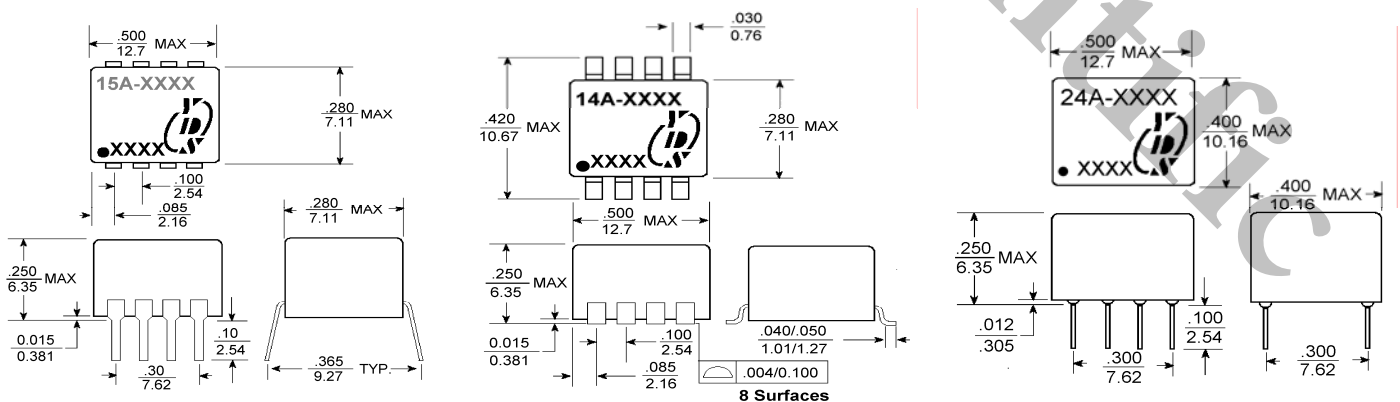
#### ELECTRICAL SPECIFICATIONS

PART NO.	DELAY TIME Td(nS)	TAP DELAY (nS)	RISE TIME Tr(nS)max
15A/14A/24A-025	25±2	5±2	4
15A/14A/24A-050	50±5%	10±2	4
15A/14A/24A-075	75±5%	15±2	4
15A/14A/24A-100	100±5%	20±2	4
15A/14A/24A-150	150±5%	30±2	4
15A/14A/24A-200	200±5%	40±2	4
15A/14A/24A-250	250±5%	50±5%	4
15A/14A/24A-300	300±5%	60±5%	4
15A/14A/24A-500	500±5%	100±5%	4
15A/14A/24A-1000	1000±5%	200±5%	4

#### PIN CONNECTIONS



#### MARKINGS AND DIMENSIONS



Dimensions: inches/mm Unless otherwise specified, all tolerances are ±.010/±0.25