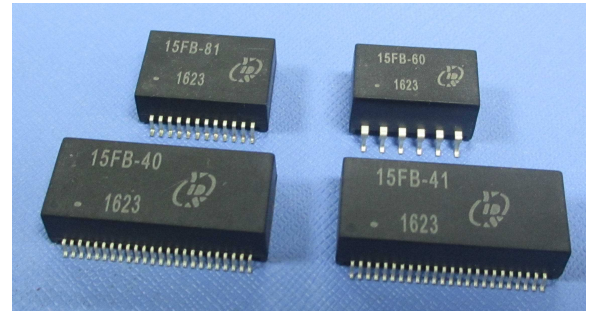




## FEATURES

- IEEE 802.3af&at/ANSI X3.263 compliant performance
- Suitable for End-span and Mid-span PoE applications
- 350&600mA current capability
- Designed for IP phone or switch applications
- Compact footprint
- Desinged to withstand IR reflow temperatures up to 235°C
- Recognized by UL 60950-1

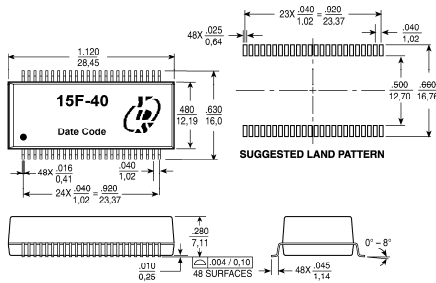


ELECTRICAL SPECIFICATIONS @25°C-Operating temperature 0°C TO 70°C														
Part Number	Ports	Insertion Loss (dB max)	Return Loss (dB MIN @100Ω)				Differential to Common Mode Rejection (dB MIN)			Crosstalk (dB MIN)			Hipot (Vrms MIN) @60Hz	DC Resistance Balance ≤(%)
			1-100 MHz	1-30 MHz	40 MHz	50 MHz	60-80 MHz	30 MHz	60 MHz	100 MHz	30 MHz	60 MHz		
15FB-40	4	-1.2	-16	-14	-13	-12	-43	-37	-33	-45	-40	-30	1500	3.5
15FB-81	1	-1.2	-16	-14	-13	-12	-43	-37	-33	-40	-35	-30	1500	-
15FB-41	2	-1.2	-	-	-	-12	-43	-37	-30	-35	-30	-25	1500	-
15FB-60	1	-1.0	-18	-15	-13	-10	-	-	-	-	-	-30	1500	-

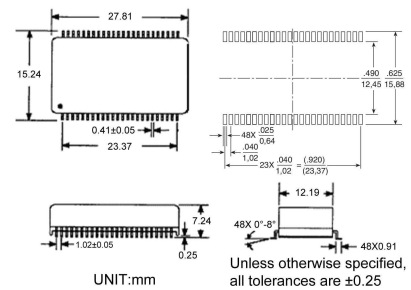
## Mechanicals

### 15FB-4X

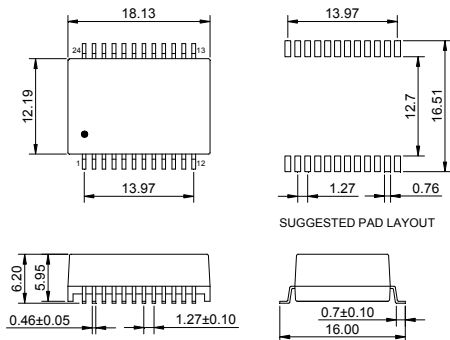
#### Molding



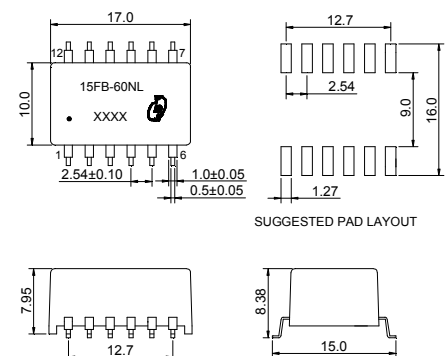
#### Bottom Potting



### 15FB-8X



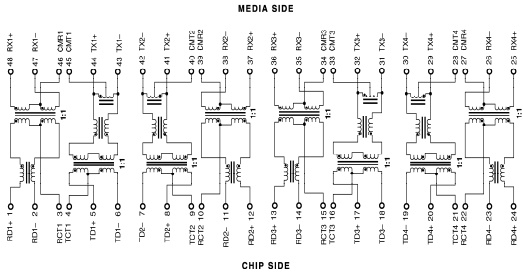
### 15FB-6X



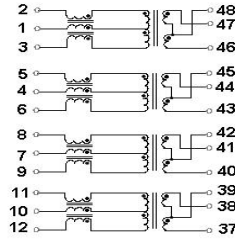


### SCHEMATICS

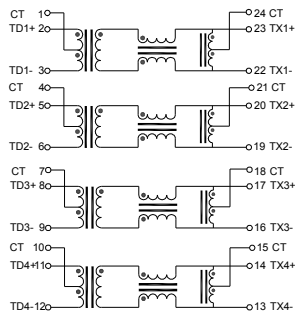
#### 15FB-40



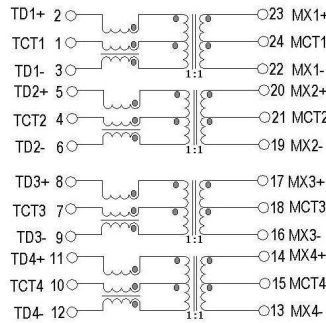
#### 15FB-42



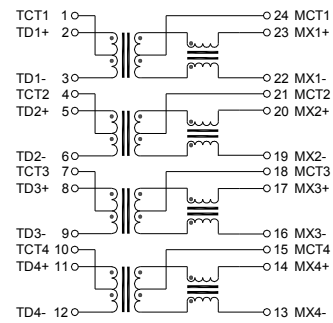
#### 15FB-81



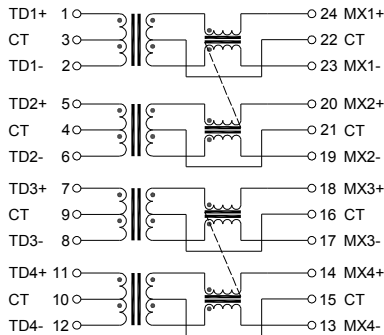
#### 15FB-83



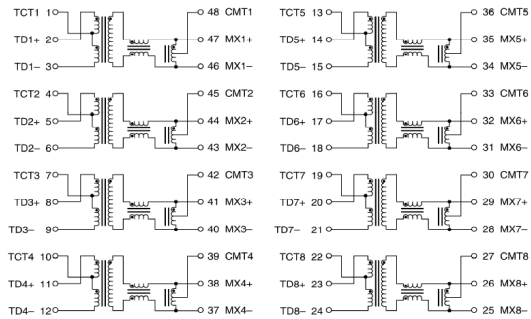
#### 15FB-84



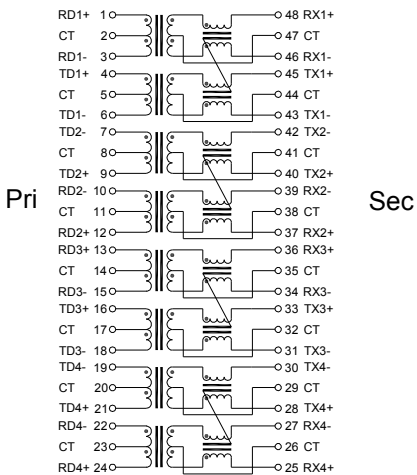
#### 15FB-89



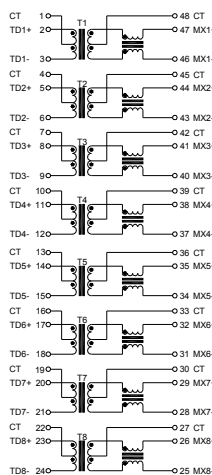
#### 15FB-48



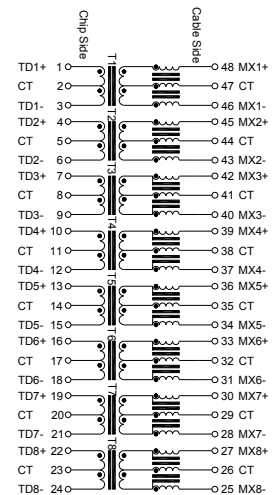
#### 15FB-41



#### 15FB-47

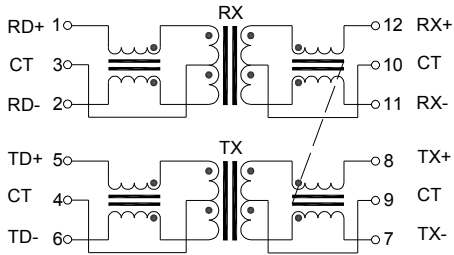


#### 15FB-4G

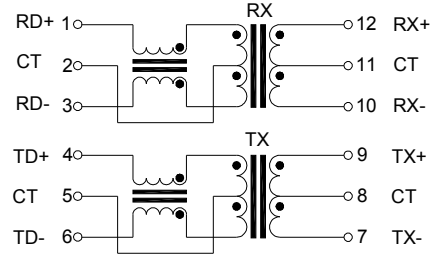




### 15FB-60



### 15FB-61



### 15FB-62

