

25Watt, Single Output ,AC/DC Power Module Converter



FEATURES:

- Universal Input 90~264VAC
- High Efficiency Up To 85%
- Protection: Short Circuit /Overload/Over Voltage
- Fully Encapsulated Plastic Case
- Internal Input Filter
- 2 Years Warranty ● ROHS Compliant

GA025 - $\frac{S}{A} \frac{05}{B} \frac{XX}{C} \frac{XX}{D}$

A:Series
B:Single Output
C:Output Voltage
D:Output Watt



Specifications typical at TA=25°C, nominal input voltage and rated output current unless otherwise specified					
Part Number	Output Wattage	Output Voltage	Output Current	Ripple & Noise	Efficiency
	(W)	(VDC)	(mA)	(mV) max(Note1)	(TYP %)
GA025-S03-14	14.0	3.3	4240	150	75
GA025-S05-XX	20.0	5	4000	150	75
GA025-S06-XX	24.0	6	4000	150	78
GA025-S07-XX	21.0	7	3000	150	78
GA025-S08-XX	24.0	8	3000	150	78
GA025-S09-XX	22.5	9	2500	150	78
GA025-S10-XX	25.0	10	2500	150	78
GA025-S12-XX	25.0	12	2100	150	80
GA025-S13-XX	25.0	13	1920	150	80
GA025-S14-XX	25.0	14	1780	150	80
GA025-S15-XX	25.0	15	1665	200	82
GA025-S16-XX	25.0	16	1560	200	82
GA025-S18-XX	25.0	18	1385	200	82
GA025-S24-XX	25.0	24	1040	240	85
GA025-S27-XX	25.0	27	925	240	85
GA025-S36-XX	25.0	36	695	240	85
GA025-S48-XX	25.0	48	520	240	85

NOTE:XX=TWO digit representing the output power(w)the output power is rising in steps of 15w to the max.output power,when the output power is maximum power,xx is omitted

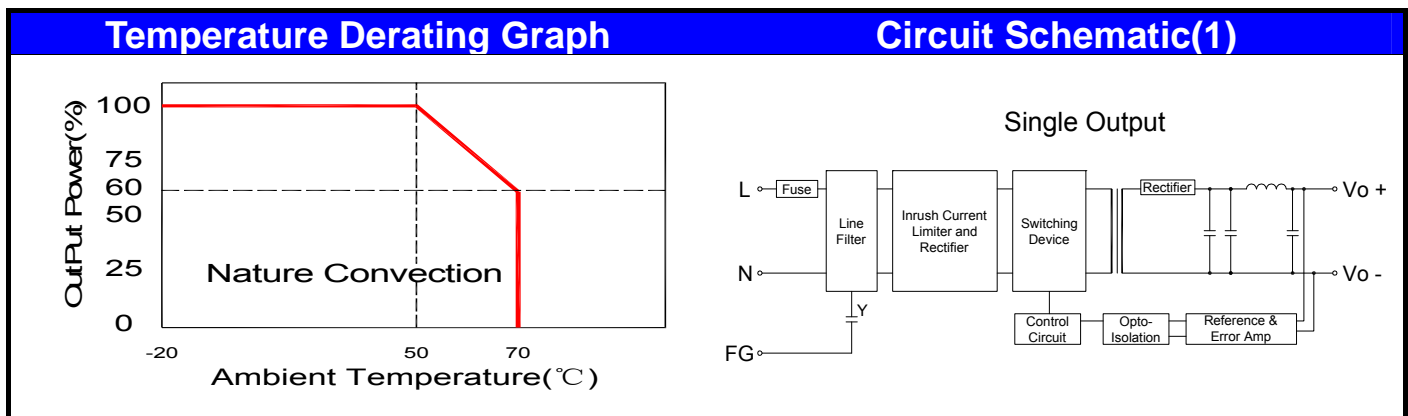
Input Specifications						
Parameters	Conditions		Min	Typ	Max	Units
Rated Input Voltage	Vo,lo nom			100~240		Vac
Voltage Range	Vo,lo nom	AC in	90		264	Vac
		DC in	120		370	Vdc
Line frequency	Vi nom,lonom		47	50/60	63	Hz
Inrush Current	Io nom	Vi:115VAC			12	A
		Vi:230VAC			20	A
Input Fuse	VDE/UL/CCC FUSE 2.5A/250V (Slow blow)					

Output Specifications						
Parameters	Conditions		Min	Typ	Max	Units
Output Voltage Accuracy	Vi nom,lo nom (Single output)	3.3....9V Models			±3	%
		10....48V Models			±2	%
Minimum Load	Vi nom	Single Output Models	0			%
Line Regulation	Io nom,Vi min...Vi max			±1		%
Load Regulation	Io min~Io nom	Single Output Models		±2		%
Transient Recovery time	Vi nom,lo nom = ←→0.5 Io nom			1,000		uS
Protection	Overload		Above 110% rated output power			
	Short circuit		Protection type: Recovers automatically after fault condition is removed			
	Over Voltage(Main Output)		120%-150% rated output Voltage			
			Protection type: Zener diode clamp			

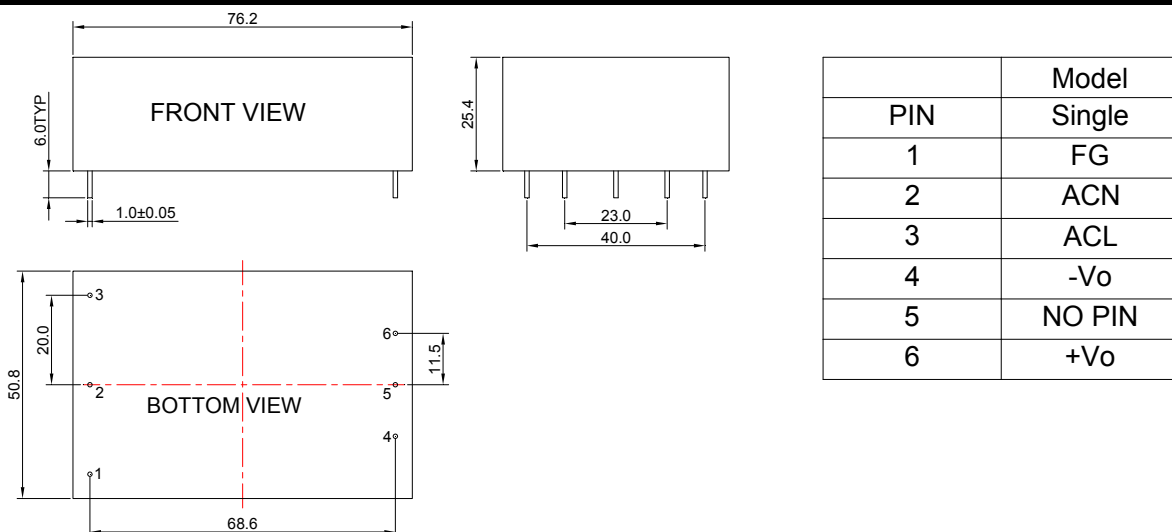
Note1. Ripple & noise is measured by using 20 MHz bandwidth, measured with a 47uf paralleled with a high-frequency 0.47uf capacitor across each output by full load.

25Watt, Single Output ,AC/DC Power Module Converter

General Specifications					
Parameters	Conditions	Min	Typ	Max	Units
Switching Frequency	Vi nom, Io nom		65		KHz
Isolation Voltage	Input / Output	3KVac/ 5mA/5Secs			
Isolation Resistance	Input / Output, @500 Vdc	100			MΩ
Operating Temperature	Operating at Vi nom, Io nom	-20		+70	°C
Derating	Vi nom, Io nom +51 to 71°C			2	%/°C
Storage Temperature	Non Operational	-40		+85	°C
Relative Humidity	Vi nom, Io nom			95	% RH
Safety Standards	UL60950-1, EN60950-1 approved				
EMI Conduction & Radiation	Compliance to EN55022				
EMS Immunity	Compliance to EN55024				
Dimension	L76.2x W50.8 x H25.4mm L3.0x W2.0 x H1.0 inches				
Cooling	Free air convection				



Markings and dimensions



Unit: mm Unless otherwise specified, all tolerances are ±0.50